



# Catch Basin Inserts

*Reducing pollutants in our waterways*

## PROJECT OVERVIEW

The Metro North Commuter Parking Lot in the Village of Katonah is a large swath of impervious land that acts as a large bucket that collects stormwater. All of the cars parking in the lot bring in loads of different contaminants that were flowing into the catch basins on the lot, and untreated into the nearby Muscoot Reservoir. Inserts were installed in the catch basins within the parking lot to reduce the amount of Phosphorus and other harmful pollutants flowing into the waterbody. This project resulted in a removal of 4.9 pounds of Phosphorus per year, along with other ecological benefits.



DRAINAGE AREA	PHOSPHORUS REDUCTION	ALGAE REMOVAL
2.08 acres	4.9 lbs/year	2,450 lbs/year



## THE PROBLEM

As urban development continues to transform natural landscapes into paved nightmares, more polluted stormwater is reaching our drinking supplies. In parking lots, this water is laden with all of the nasty and unwanted pollutants that come from your car such as oils, fluids, rubber compounds, heavy metals, along with all of the litter that people leave behind. The Metro North Commuter Lot sees a lot of traffic every day of the week, which introduces a large amount of pollutants which subsequently feeds algal blooms.

This parking lot, with a drainage area of 2.08 acres, collects approximately 4.9 pounds of phosphorus per year which was funneled into the Muscoot, untreated. The New York State Department of Environmental Conservation has found that every one pound of Phosphorus can allow for the growth of almost 500 pounds of algae, meaning that this small parking lot likely contributed to the growth of 2,450 pounds of algae annually!

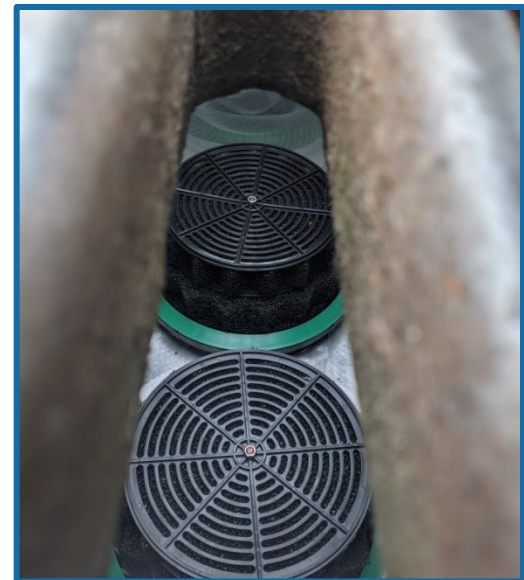
## THE SOLUTION

Simple, locally deployed catch basin inserts. Many impervious areas, such as parking lots, malls and commercial districts, do not have the real estate available to install traditional stormwater retrofit practices. However, locations that already have catch basins can utilize these filters to help reduce Phosphorus loading throughout the watershed.

The filtration product is designed to be placed right into existing catch basins to collect and treat stormwater that would typically flow right into the nearby waterway. They work by allowing the water to flow through a specialized filter media that extracts the specific nutrient causing the problem.

### Catch Basin Insert Benefits:

- Fast installation, only taking 20 minutes per basin
- Minimal interference to location for short duration
- Deployable in highly urbanized areas
- High Removal Efficiency
- Low installation and maintenance costs



[Click here to watch Fabco show the simple installation process!](#)